

Aldrich Memorial Nursery School
855 Essex Parkway NW
Rochester, MN 55901
507-289-3097
aldrich@aldrichnurseryschool.com

If you would like to receive this newsletter via email, have an address change or would like to be removed from our mailing list, please contact us at friends@aldrichnurseryschool.com or call the office.

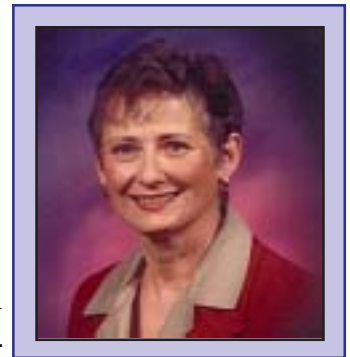


Greetings to our “Friends of Aldrich!”

Because of your past history with Aldrich, you are now considered one of our “Friends of Aldrich!” We have decided to publish a periodic newsletter to keep you informed of current happenings at our school, as well as our community involvement, facility updates, staff updates, and our future plans. We would also like to extend an invitation to you to visit our school, our web site, or to drop us a line.

Meet the Director

Dorey Johnson is a native of Rochester and has lived here most of her life. Her professional history has included being a classroom teacher and learning disabilities teacher with Rochester Public Schools; wearing many hats in the business world of Johnson Printing; teaching five years at Aldrich; and now serving her tenth year as Director. Dorey and her husband, Chuck, have two children and four grandchildren. Her leisure activities include hardanger stitchery, biking, reading and plants.



Highlights from the last few years:

- 1999 – We built an addition to our building. We added:
 - a seventh classroom
 - an office for the Assistant Director
 - a Conference Room (used for parent-teacher conferences, meetings, parent education sessions, one-on-one place to work with children, etc.)
 - a second Playroom, complete with a tricycle path
 - a second storeroom, much larger than the first
 - a furnace/laundry room, complete with washer and dryer
- Along with the building expansion came a playground expansion. Playground 3 now has a large grassy area for the children to play on, as well as the original rocky area. A basketball court was also added to Playground 3.

Continued on next page

Bonnie Stauff Accepts Assistant Director Position

Early in the 1999-2000 school year, it became obvious that the administration of the school was becoming a very large task for the current staff and board. The Aldrich Board of Directors and Director Dorey Johnson decided to bring an additional person onto the school's administration team for the following school year.

Bonnie Stauff was hired in April 2000 for the position of Assistant Director. Bonnie has had a long and wonderful relationship with Aldrich. She has been a teacher at AMNS since 1989, with a total of 25 years of Early Childhood teaching experience. The position of Assistant Director is a part time position. Bonnie has morning office hours and teaches five afternoons each week.



Continued from front page

Three classrooms share this playground. For more information on playground expansion, see page 5.

- In May 2000, a concrete dinosaur was donated to Playground 3 in memory of Jacque Garrett, past Aldrich teacher who died of cancer.
- In October 2001, a Recognition Tea was held to honor past and present Aldrich teachers who had or have been on the staff for 15 years or more. Seventeen staff members were honored. A plaque was purchased with their names on it. The plaque now hangs in our front entry.
- In January 2002, present parent and artist, Scott Nelson, offered his services to each of the three and four year old classes by doing presentations on clay and sculpture. The children were then able to make their own sculptures.
- The Education Committee of the Board presented three Parenting Classes last school year:
 1. October, 2001 – “Children and Safety Issues”
 2. February, 2002 – “Know Your Muslim Neighbor”
 3. April, 2002 – “Parenting Skills, Communication and Discipline”
- A full upright piano was donated in December of 2001 by a past Aldrich family, Bill and Heidi Oehler, and daughters Becky and Lucy.
- A Valentine's Day Party was held in February of 2002 as a fundraiser for Aldrich. It included crafts, music, games, snack and story time with Winnie the Pooh. Proceeds went toward new playground equipment.



AMNS Financial Assistance Scholarships Available

Ever since Aldrich opened its doors in 1954, the Board of Directors has worked to ensure that *all* children in our community have access to its high-quality programs. One of the ways this is accomplished is through the Financial Assistance fund. Funds are raised throughout the year through grants, individual gifts, and designated fundraisers. For the 2001-2002 school year, we had \$12,000 available to assist families who might not otherwise be able to afford a preschool education for their child.

National Accreditation

In the 2001-2002 school year, Aldrich once again went through the accreditation process. Aldrich first received accreditation through the National Association for the Education of Young Children (NAEYC) in 1988; we were one of the first in the country to do so. We have been accredited continuously since that time, receiving merit extensions because of our high standards.

Accredited by the
National Academy
of Early Childhood
Programs



What does “NAEYC - Accredited” mean? Accredited early childhood programs voluntarily measure up to national standards of quality established by NAEYC, the professional organization for early childhood educators. Going beyond minimum licensing standards, accredited programs make a commitment to excellence. These programs undergo in-depth self-study, independent observation by professional experts, and are reviewed by a national committee. Approval is for a three-year period, subject to review for accreditation.

COMMUNITY

Aldrich continues to be involved with the community in a number of ways.

- Community Awareness Program (CAP) – Students from the Rochester public schools participate in our classrooms as part of their assigned classwork.
- Lourdes students also participate in classrooms.
- We continue to offer placement for Student Teachers from Winona State University, University of Northern Iowa, St. Thomas University and Luther College.
- We participate in the CCRR annual Family Fun Night.
- We arrange for firefighters to come into the classrooms each year to help children become aware of fire safety.
- We arrange for dentists to come into the classrooms to teach good dental hygiene.
- We periodically collect donations for charity drives.



Young Explorer Computers

We are excited to announce that AMNS has Young Explorer computers in six of the seven classrooms. Filling the classrooms with Young Explorers was made possible by the grants and generosity of two organizations. The Rochester Rotary Club provided us with funds to purchase one Young Explorer. The 2000 IBM Technology Donation Program administered by the United Way was the provider of the others.

The Young Explorer computers are wonderful tools for preschool learning. They provide hands-on computer opportunities for all children, especially those who have no

computer access at home. These special units promote teamwork among students in a learning situation and encourage team problem solving and resolution.

Sign Language Enrichment Classes at Aldrich (February, 2001)

Thanks to a generous grant donation from the Rochester Morning Sertoma Group, Aldrich children were able to attend three sign language enrichment sessions.

Sign language is an excellent learning tool for children of all ages. It promotes eye-hand coordination; expands the ability to communicate; reinforces beginning learning of alphabet letters, words, and sentences; and encourages expression of emotions. By focusing on aural, visual and physical modes of learning, sign language encourages children to learn language using different modes.

At each session, a new topic was introduced and the previous week's topic was reviewed. These topics included family and friends, feelings, and food. Classes used sign language and spoken English, and children were involved in doing signing and watching others sign.

Each session was facilitated by Colette Miller, then retired Aldrich teacher. Colette only managed to stay retired for one school year! We are happy to have her back on the Aldrich staff.



Playground One Expansion

Aldrich continues to grow. In the summer of 2001, we moved the fence outward and expanded Playground One. We are enjoying the added space, as well as a grassy area on this playground. Another addition to Playground One is a new basketball hoop and some balls to go with it. We presently have a committee formed to look into additional equipment. Some of the funding for this equipment is available through a grant from Rochester Kiwanis, through profits from the Aldrich Valentine Party, and through a donation from the “Committed to Kids” campaign developed by Aid Association for Lutherans.



Arts and Sciences Class

Aldrich now offers an enrichment class in the afternoon. This class has additional emphasis in the areas of the arts and the sciences. Some extended topics include poetry, theatre and dance, gardening, and sports. Various resource people from the community are used and field trips are planned. The class continues to follow the Aldrich philosophy – children have many choices, free play time, and hands-on experiences. The class is being taught by Joan Grosso and Linda Wilkins.

Visit Our Website!

<http://www.aldrichnurseryschool.com>

Stay tuned . . . for more information on the iGive fundraiser in the next issue of “*Friends of Aldrich*,” or you can go to the Aldrich web site NOW and click on iGive. This is a good way to help Aldrich when you make your Internet purchases.

Bicycle Helmets

At Aldrich, we are always striving for ways to make our school environment as safe as possible. For that reason we now provide bicycle helmets to be worn in Playroom 2 and on the outside trike path.

Spring Carnival

Aldrich continues its tradition of putting on the Country Fair each spring. Last year the theme was “Aldrich Kids Are Out of This World,” focusing on Outer Space. It was a huge success! Proceeds from the fair go toward financial assistance and other Aldrich needs.

Did You Know?

In the 2001-2002 school year, there were. . .

- Approximately 495 children enrolled at Aldrich.
- There were 28 teachers on staff.
- The Aldrich Board of Directors consisted of 25 volunteer members from the community.

Recent History

In the fall of 1991, the Aldrich staff, children and parents moved into our new building at 855 Essex Parkway NW. The school consisted of six classrooms, a main office, director's office, kitchen, storeroom, and playroom. The playground was divided into three separate areas so that each playground was shared by two classrooms. All the classrooms have doors directly to a bathroom, and a door right onto the playground. Eight years later we felt the need to expand, so we built an addition. We added another classroom, an office for the assistant director, a conference room, another playroom, and another larger storeroom.



New building in 1991



Expansion of New Building in 1999

History of Aldrich

In 1944 the Mayo Foundation formed the Rochester Child Health Institute. The head of pediatrics at Mayo Clinic selected Dr. Aldrich to carry out the study of children in a community. Because Dr. Aldrich believed a nursery school to be an essential part of a community, he joined forces with a women's group to found the Demonstration Nursery School. Dr. Benjamin Spock was also on the advisory board for the school. In 1952, after Dr. Aldrich's death, the board of directors incorporated the school and renamed it Aldrich Memorial Nursery School.

Former Howe Hotel



*Aldrich Memorial
Nursery School
1954 - 1991*

Return Service Requested

Aldrich Memorial Nursery School
855 Essex Parkway NW
Rochester, MN 55901

